

ISTHMIAN CHARITY SHIELD

Sponsored by



Atcost Buildings Ltd.

SLOUGH TOWN

LEAGUE CHAMPIONS

V.

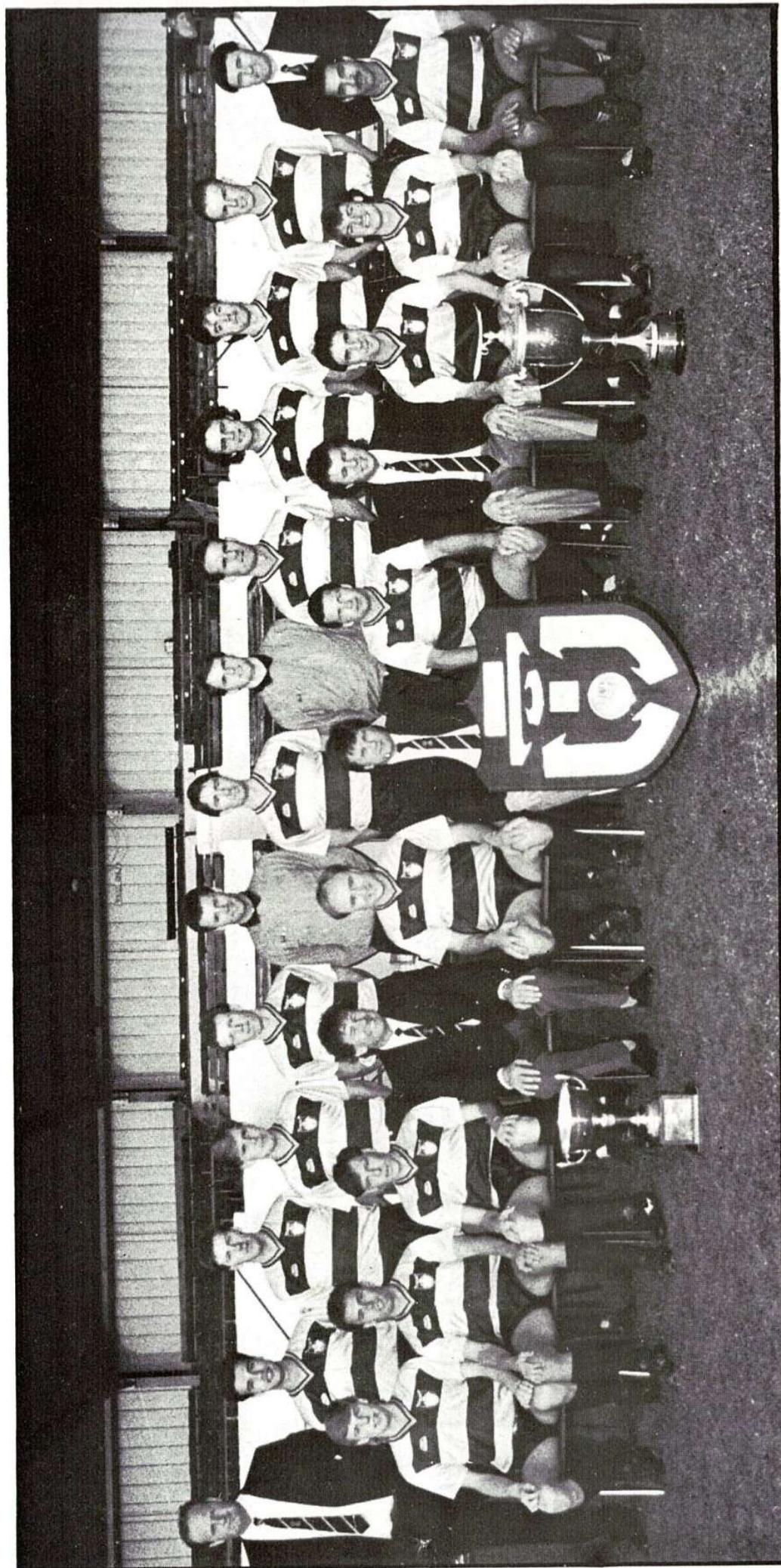
AVELEY

AC DELCO CUP WINNERS

on Monday 13th. August 1990 at Kingstonian F.C.



OFFICIAL PROGRAMME 50p



SLOUGH TOWN F.C. 1989/90 VAUXHALL LEAGUE CHAMPIONS

STANDING[L to R] Kevin Thornton[kit man]; Dominic Di Cioccio; Kevin Rowe; Bobby Dell; Jeff Bateman; Gary Lester; Gary Dodd; Trevor Bunting; Tony Knight; Tony Dell; Robert Gold; Micky Creighton; Brian Burke[Physio.]
 SEATED[L to R] Barry Rake; Steve Thompson; Tommy Langley; Dave Cissell[Yth. Manager]; Trevor How[Asst. Manager]; Alan Davies[Manager]; Mark Hill[Captain]; Graham Cox[Chief Scout]; Mark Adams; Robbie Johnson; Neal Stanley.

Chairman's



Comments.....

Good evening and welcome to the Atcost Charity Shield. Unfortunately, I am unable to attend tonight's match through illness but I am particularly pleased that our President, Barry East will be with you.

The Charity Shield match is a traditional curtain raiser to our season and I expect that Slough Town, our Premier Division Champions and Aveley, our AC Delco Cup winners, will produce an exciting and hard fought contest. Tonight's match is sponsored by Atcost Buildings, I thank them for their continued support and welcome Mike Stubbs their Managing Director as one of our guests.

The game has traditionally raised considerable sums for charity and proceeds from tonight will go to two worthy causes, The Multiple Sclerosis Society and The Cardiac Research and Development Fund.

Finally, I must thank Terry Weir the Chairman of Kingstonian F.C. and his committee for their help in staging the game.

Alan C. F. Turvey,
Chairman & Managing Director
Vauxhall Football League.

Introducing...

SLOUGH TOWN FOOTBALL CLUB

TREVOR HOW (Defender) Assistant player-manager who joined in March 1988 from Harrow borough. Was a member of Watford's promotion sides in the early 1980's and played nearly 100 league games. Also played for Wycombe Wanderers, Aylesbury United and Harrow Borough.

ROBBIE JOHNSON (Defender) Joined in August 1989 after leaving Enfield. Has also played for Harrow, Hayes, Arsenal and Brentford where he made two League appearances. Has represented the VFL and Middlesex County.

TONY KNIGHT (Defender) Resolute player in his sixth season with the club, having joined from Hillingdon Borough. Previously with Harrow Borough, Wembley and Arsenal. Has represented the VFL.

STEVE THOMPSON (Midfield) Joined in March 1988 after being posted by the RAF from Cornwall where he was playing for Saltash. Had a short spell in the League with Bristol City at one stage. He is a regular Combined Services player and has also played for the Vauxhall League.

BARRY RAKE (Midfield) Made an instant impression when he was promoted into the first team during 1988/89 and was chosen to represent the VFL after only five games. Previously an apprentice at Millwall.

MARK ADAMS (Winger) Joined Slough in November 1988 from Harrow. Has also played for Hendon, Hayes, Chesham, Kingstonian and Wealdstone and has represented the VFL.

MARK MALLINSON (Defender) Another RAF man, he joined Slough last season. His previous clubs include Newbury and Hungerford where he played in the F.A. Vase semi-final. Has represented the Combined Services.

MARK HILL (Defender) Skipper at Maidstone in 88/9. He joined the Rebels despite offers from Conference clubs. Played 56 games in the League with Brentford before joining Wycombe and has also played for Q.P.R. Is the Slough Town skipper. He has played for an FA XI.

TOMMY LANGLEY (Striker) The best known player in Slough's line-up, having joined the club from Exeter in July 1989. Originally played for Chelsea but has had a nomadic career that has taken in QPR, AEK Athens, Hong Kong, Aldershot and Tampa Bay Rowdies. An England Under 21 International. He has during his career commanded transfer fees in the region of £750,000.

NEIL STANLEY (Striker) The Rebels leading goalscorer last season. Joined in August 1987 from Wycombe. Has also played for Wokingham and Farnborough. Has represented the VFL and the Football Association.

GARY LESTER (Goalkeeper) Experienced 'keeper signed last season from Wycombe after playing the second half of the 88/9 season at Wexham Park on loan. Started with Chalfont St. Peter and spent many seasons at Loakes Park with the Wycombe club, which culminated in a testimonial last season.

GARY DODD (Midfield) Malawi-born player who joined from Kingstonian in September 1987. Also played for Farnborough Town and has represented both the Vauxhall League and Middlesex Wanderers.

DARREN ANDERSON (Central Defender) A close season signing from Fourt Division Aldershot for whom he made 180 appearances. He has also played for Charlton Athletic.

Football in Slough began in the third quarter of the last century with the formation of a club by the name of the Swifts and it is believed that they played at the Upper Dolphin as early as 1860. They entered the third ever F.A. Cup competition in 1873, in which they lost 0-2 in the semi-finals to Royal Engineers, and they also reached the last four in 1876 and 1886 when they were beaten 1-2 on each occasion by Wanderers and Blackburn Rovers respectively. However, the maintaining of the club became difficult and it was eventually taken over by Slough Albion and the Young Men's Friendly Society who, in 1890 renamed the new club Slough F.C.

Progress in the early years in the Southern Alliance and the Great Western Suburban League was slow but, in 1920 after failing to obtain election to the Isthmian League, the club joined the Spartan League and remained there until the outbreak of the Second World War; five times they were runners-up but they never won the championship. During the war, the club played in the Herts. & Middlesex League but problems arose with their ground and they were forced to leave the Dolphin Stadium due to Saturday afternoon greyhound meetings. After playing at Slough Cricket Club and at York Road, Maidenhead, they joined forces in 1943 with Slough Centre F.C. at the Belfast Road ground with the combined club being called Slough United.

In 1945 they rejected the Spartan League and became founder members of the Corinthian League; it was this act of defiance which led to the club's nickname, "The Rebels". In the same year, they reached the first round proper in the FA Cup for the first time, losing 2-6 to Bromley over two legs. Two years later, when players associated with the Community Centre of Slough workers decided to reform the Slough Centre FC and enter the Spartan League, Slough United changed their name to Slough Town and returned to the Dolphin Stadium. After twice being runners up, Slough were Corinthian League champions in 1951 (their diamond jubilee season) and won a championship for the first time in their history. However, apart from winning the Berks. & Bucks Senior Cup in 1955, this an uneventful period in their history. In 1963 when the Corinthian League ceased to exist they became part of the Athenian League Division One.

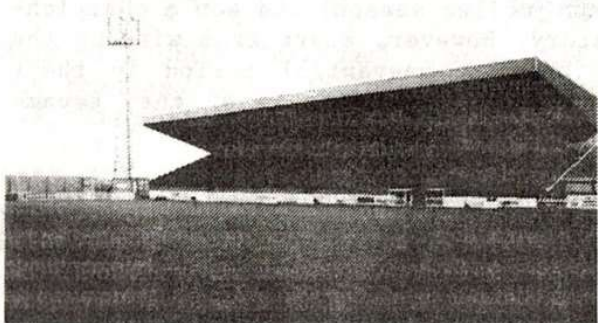
Promotion to the Premier Division came in 1965 and then, only three years after that, the Premier Division championship itself was won. It was not long after that that Slough became one of the strongest amateur clubs in the South of England with the Championship being won in 1972 and 1973; the club at this time under the management of Tommy Lawrence, usually did well in the FA Amateur Cup and in 1973 reached the Final, only to lose to a last minute goal to Walton & Hersham before a 41,000 crowd. They had previously been beaten semi-finalists in 1971 at the hands of Dagenham.

Slough were accepted as founder members of the Isthmian League Division Two in 1973 and, despite having to re-build a completely new side, were promoted at the end of the first season when they finished as runners-up to Dagenham. This was a hectic period for the club because in 1974, having been requested to vacate the Dolphin Stadium by the owners, the Greyhound Racing Association, they moved to a new ground at Wexham Park at the same time as they began their first season in the top season of the Isthmian League. Seven years later they won the Premier Division championship as well as the Hitachi (League) Cup and Berks. & Bucks Senior Cup. Laurie Churchill was the manager at the time.

Other than in 1974/5 Slough have progressed into the Competition Proper stage of the F.A. trophy, with their best run being in 1976/7 when they were beaten on aggregate by Dagenham in the semi-final. They have done well

in the F.A. Cup in recent years and have got as far as the Second Round Proper in four of the past ten years. Back in 1982 they beat Millwall, then in the Third Division, by a late goal in the first round. While in December 1985, when they went to Brisbane Road to play Leyton Orient, Slough led by two goals to nil at half-time, however, the Football League club equalised and on to win the replay by the odd goal in five.

Slough Town established a regular place in the top third of the Vauxhall League Premier Division over the last decade and only once did they finish out of the top eight. In the last four seasons they finished 3rd., 3rd., 3rd. and Champions in their Centenary year. The Centenary was topped off by acceptance into the GM Vauxhall Conference for the coming 1990/91 season.



Over 170 semi-professional grounds have benefited from the Trust's grant-aid schemes.



HELPING THE GAME

The Football Trust 1990 has been created to help the game at all levels and to assist clubs meet the requirements of Lord Justice Taylor's Final Report.

Developing the game outside the professional structure is an important objective and substantial funds have been made available for essential safety work and pitch and changing room improvements at Pyramid clubs.

Each year The Trust expects to receive £20 million from the reduction in Pool Betting Duty plus the £10 million continuing contribution from the Spotting-the-Ball competition organised by Littlewoods, Vernons and Zettlers. This money will be invested in a broad range of projects which benefit football throughout the United Kingdom including improvements to grass roots pitches, developing Football and the Community schemes, provision of family enclosures, combatting hooliganism and raising safety standards at British grounds.

CHARITY SHIELD PREVIOUS WINNERS

	Winners		Runners-Up		Venue
1978/79	Enfield	2	Dagenham	1	Enfield
1979/80	Barking	1	Enfield	0	Enfield
1980/81	Enfield	2	Sutton United	1	Enfield
1981/82	Wycombe Wanderers	4	Slough Town	1	Slough
1982/83	Leytonstone Ilford	3	Sutton United	2	Leytonstone
1983/84	Wycombe Wanderers	1	Sutton United	0	Wycombe
1984/85	Sutton United	3	Harrow Borough	1	Harrow
1985/86	Wycombe Wanderers	3	Sutton United	1	Sutton
1986/87	Yeovil Town	5	Sutton United	1	Yeovil
1987/88	Wycombe Wanderers	1	Bognor Regis Town	0	Wycombe
1988/89	Yeovil Town	4	Bromley	0	Yeovil
1989/90	Redbridge Forest	2	Bishop's Stortford	1	B. Stortford

Atcost, the specialists in Stands & buildings for non league football clubs.



**Atcost
Sport & Leisure
Buildings**

Please arrange for someone to contact me.

Name: _____

Address: _____

Tel. No.: _____

Post this coupon to: Atcost Buildings Ltd.

Spa House, 18 Upper Grosvenor Road,
Tunbridge Wells, Kent TN1 2EP
Tel Tunbridge Wells (0892) 26288



SLOUGH TOWN

Amber Shirts
Blue Shorts
Amber Socks

1. Gary LESTER
2. Trevor HOW
3. Robbie JOHNSON
4. Tony KNIGHT
5. Darren ANDERSON
6. Gary DODD
7. Barry RAKE
8. Neal STANLEY
9. Tommy LANGLEY
10. Steve THOMPSON
11. Mark ADAMS
12. Kevin ROWE
14. Tony DELL



AVELLE

Royal Blue Shirts
White Shorts
Blue Socks

- Dave ANNETTS 1.
- Liam CUTBUSH 2.
- Garry PETTETT 3.
- Tony BALDWIN 4.
- John REES 5.
- Paul PIZZEXY 6.
- Graham DALY 7.
- Billy STEVENS 8.
- Nigel JEYES 9.
- Jason SPITERI 10.
- Alan BRETT 11.
- Bobby MOYCE 12.
- Paul TOUSENT 14.

TODAY'S OFFICIALS

Referee: Mr. P. Vosper (Enfield, Middx.)
Linesmen: Mr. R. Grey (Thatcham, Berks.)
Mr. K. Parsons (Newbury, Berks.)
Reserve Official: Mr. J. Abbott (Northolt, Middx.)

THE MAN IN THE MIDDLE

Mr. Paul Vosper our Referee here this evening commenced refereeing in 1981 and obtain promotion to the Vauxhall League Referees list in 1987. He was promoted to the Football League line in 1988 and to the panel of Referees in 1990. A 32 year old man, Paul is still single and works for British Telecom. His hobbies include fishing, cricket and travelling. Amongst his appointments during 1990 he was linesman for England Under 18's v. Poland Under 18's at Wembley. To date his most memorable match.

Introducing...

AVELEY FOOTBALL CLUB

DAVE ANNETTS (Goalkeeper)

Joined last season from Basildon United. Selected for the Essex County side last season, he is also Club Captain. His other clubs include Tilbury, Witham Tn. and Billericay Tn.

GRAHAM DALEY (Defender)

In his third season at Aveley. "Arthur" as he is known is very fast and enjoys getting forward. His former club was Walthamstow Avenue. Was voted "Man of the Match" in last season's AC Delco Cup Final.

LIAM CUTBUSH (Midfield)

In his second season with Aveley following his move from Dartford. A midfield man with a natural left sided ability.

GARY PETTETT (Defender)

Operates well in the back four. He is an experienced stylish player who is in his second season at Millfield. His former clubs include Rainham Town and Dulwich Hamlet.

JOHN REES (Forward)

Big, strong and fast, last year's "find of the season" from junior football. "J.R." is frequently amongst the goals, scored ten times last year.

NIGEL JEYES (Forward)

Signing last season from Basildon United where he was their top scorer. Formerly with Dartford and Tilbury.

BOBBY MOYCE (Forward)

Scored 20 times last season. Signed from Rainham Town in 1987 where he was also leading scorer. His previous club was Erith & Belvedere.

ALAN BRETT (Forward)

A speedy player who can operate on both flanks and is always amongst the goals and action. Leading scorer this season, his former club was Hornchurch. Last season's "Player of the Year".

BILLY STEVENS (Defender)

One of the more experienced left sided players in the side who joined from Grays Athletic in 1987.

TONY BALDWIN (Defender)

Stylish player in his second spell at Aveley following a lengthy groin injury. His former clubs include Dartford and Dulwich Hamlet.

PAUL TOUSENT (Utility)

Signed from Billericay Town last season. Fast clever ball player who enjoys plenty of involvement.

PAUL PIZZEY (Midfield)

Joined this season following three years at local rivals, Purfleet.

JASON SPITERI (Forward)

Deceptive tricky forward who joined this season from Redbridge Forest. Was previously with Clapton.

Aveley Football Club were first formed in 1927 and competed in several local leagues with success until the outbreak of War in 1939.

In 1946 the club re-formed and joined the Thurrock Combination. "The Millers" lifted the Essex Junior Cup in both 47/8 and 48/9, the latter being their last season as a junior club.

Season 1949/50 saw the Essex County Football Association grant Aveley senior status and they were elected to the Second Division of the London League. Within a year they were members of the Division One, where they soon became Champions.

In 1952 the purchase of their present "Mill Field" ground was completed, and in 1955 they were elected to the Delphian League.

No success came in the Delphian League, although the League Cup was won in the 1961/2 season.

1963/4 saw the amalgamation of the Athenian, Corinthian and Delphian Leagues, forming a new Athenian League with three divisions (Premier, One and Two). Aveley found themselves placed in Division Two, but won promotion in 1968/9 when they finished as runners-up. Two seasons later the club enjoyed probably their best ever success when they won the Athenian League Division One championship as well as reaching the quarter-final of the F.A. Amateur Cup.

After two seasons in the top flight of the Athenian League Aveley were elected to the newly formed Isthmian League Second Division. In their first season they finished a promising fifth, however, this trend was not to continue as the next eleven seasons saw the "Millers" permanently fixed to a low mid-table position. At the end of the 1985/6 campaign they finished in bottom place and were relegated to the Division Two North.

Their first season in the Division saw them finish in 5th. place, but a disastrous season followed, finishing in 21st. place. Fortunes improved with 9th. place in season 1988/89.

During their Isthmian years the club have lifted three trophies. In 1979/80 the Essex Thameside Trophy was won, in 1982/3 the Hornchurch Charity Cup found its way to Millfield as did the East Anglian Cup in 1988/89 season, where the club triumphed after a very good 3-1 win over Cambridge City in the Final.

However 1989/90 was possibly the club's best ever season for after a gruelling Division Two season they were runners-up behind Heybridge Swifts and they even topped this achievement by defeating Premier Division St. Albans City 3-0 on the ground of Dagenham F.C. in front of a 1,000 plus crowd to lift the Vauxhall League's coveted AC Delco Cup, the first club from Division Two North ever to do so.

OPENING HOME FIXTURES FOR KINGSTONIAN FOOTBALL CLUB

August 18th.	Redbridge Forest	Kick-off 3.00p.m
August 28th.	Carshalton Athletic	Kick-off 7.30p.m.
September 1st.	Staines Town	Kick-off 3.00p.m.



European Profiles Limited

We are proud to be the
major supplier of pre-coated
steel roofing & cladding profiles
to

Atcost Buildings Ltd.

BRITISH CLADDING AT ITS BEST

*Llandybie, Ammanford, Dyfed SA18 3JG
Telephone: Llandybie (STD 0269) 850691
Telex: 48171 EPCLAD G
Facsimile (0269) 851096*



GET ALL THE LEAGUE ACTION, PHONE





CLUBCALL





0898 12 11 55




 24 hours **EVERY** day — Updated daily.

 News from all around the League.

 Interviews, features and results.

 The official Vauxhall Football League information service.

 **SUPERCALL** Calls cost 25p/min. cheap; 38p/min. other times,
BT Supercall, 1-9 Downham Rd., N1 5AA

Final League Tables



VAUXHALL LEAGUE PREMIER DIVISION:

	P1	W	D	L	Gf	Ga	Pts.
SLOUGH TOWN	42	27	11	4	85	38	92
Wokingham Town	42	26	11	5	67	34	89
Aylesbury United	42	25	9	8	86	30	84
Kingstonian	42	24	9	9	87	51	81
Grays Athletic	42	19	13	10	59	44	70
Dagenham	42	17	15	10	54	43	66
Leyton-Wingate	42	20	6	16	54	48	66
Basingstoke Town	42	18	9	15	65	55	63
Bishop's Stortford	42	19	6	17	60	59	63
Carshalton Ath.	42	19	5	18	63	59	62
Redbridge Forest	42	16	11	15	65	62	59
Hendon	42	15	10	17	54	63	55
Windsor & Eton	42	13	15	14	51	47	54
Hayes	42	14	11	17	61	59	53
St. Albans City	42	13	10	19	49	59	49
Staines Town	42	14	6	22	53	69	48
Marlow	42	11	13	18	42	59	46
Harrow Borough	42	11	10	21	51	79	43
Bognor Regis Town	42	9	14	19	37	67	41
Barking	42	7	11	24	53	86	32
Bromley	42	7	11	24	32	69	32
Dulwich Hamlet	42	6	8	28	32	80	26

DIVISION ONE:

	P1	W	D	L	Gf	Ga	Pts.
Wivenhoe Town	42	31	7	4	94	36	100
Woking	42	30	8	4	102	29	98
Southwick	42	23	15	4	68	30	84
Hitchin Town	42	22	13	7	60	30	79
Walton & Hersham	42	20	10	12	68	50	70
Dorking	42	19	12	11	66	41	69
Boreham Wood	42	17	13	12	60	59	64
Harlow Town	42	16	13	13	60	53	61
Met. Police	42	16	11	15	54	59	59
Chesham United	42	15	12	15	46	49	57
Chalfont St. Peter	42	14	13	15	50	59	55
Tooting & Mitcham	42	14	13	15	42	51	55
Worthing	42	15	8	19	56	63	53
Whyteleafe	42	11	16	15	50	65	49
Lewes	42	12	11	19	55	65	47
Wembley	42	11	10	21	57	68	43
Croydon	42	9	16	17	43	57	43
Uxbridge	42	11	10	21	52	75	43
Hampton	42	8	13	21	28	51	37
Leatherhead	42	7	10	25	34	77	31
Purfleet	42	7	8	27	33	78	29
Kingsbury Town	42	8	10	24	45	78	25*

* 9pts. deducted by the League

DIVISION TWO NORTH:

	P1	W	D	L	Gf	Ga	Pts.
Heybridge Swifts	42	26	9	7	79	29	87
AVELEY	42	23	16	3	68	24	85
Hertford Town	42	24	11	7	92	51	83
Stevenage Borough	42	21	16	5	70	31	79
Barton Rovers	42	22	6	14	60	45	72
Tilbury	42	20	9	13	68	54	69
Basildon Utd.	42	13	20	9	50	44	59
Collier Row	42	15	13	14	43	45	58
Royston Town	42	15	11	16	63	72	56
Saffron Walden Tn.	42	15	11	16	60	73	56
Vauxhall Motors	42	14	13	15	55	54	55
Clapton	42	13	16	13	50	46	54*
Ware	42	14	11	17	53	59	53
Hemel Hempstead	42	12	15	15	58	70	51
Billericay Town	42	13	11	18	49	58	50
Hornchurch	42	12	12	18	49	64	48
Berkhamsted Town	42	9	16	17	44	68	43
Finchley	42	11	10	21	50	75	43
Tring Town	42	10	9	23	48	70	39
Witham Town	42	8	14	20	44	56	38
Rainham Town	42	9	11	22	48	75	38
Letchworth Gdn. C.	42	7	12	23	30	68	33

lpt. deducted by the League

DIVISION TWO SOUTH:

	P1	W	D	L	Gf	Ga	Pts.
Yeading	40	29	4	7	86	37	91
Molesey	40	24	11	5	76	30	83
Abingdon Town	40	22	9	9	64	39	75
Ruislip Manor.	40	20	12	8	60	32	72
Maidenhead Utd.	40	20	12	8	66	39	72
Southall	40	22	5	13	56	33	71
Newbury Town	40	21	7	12	50	36	70
Flackwell Heath	40	16	11	13	69	65	59
Hungerford Town	40	14	16	10	54	51	58
Egham Town	40	12	14	14	39	38	50
Banstead Athletic	40	14	8	18	46	47	50
Harefield Utd.	40	13	9	18	44	46	48
Chertsey Town	40	13	9	18	53	58	48
Epsom & Ewell	40	13	9	18	49	54	48
Malden Vale	40	13	7	20	36	67	46
Eastbourne Utd.	40	11	10	19	47	65	43
Camberley Town	40	11	9	20	44	66	42
Feltham	40	11	7	22	47	80	40
Bracknell Town	40	10	9	21	40	57	39
Petersfield Utd.	40	10	8	22	48	93	38
Horsham	40	4	8	28	29	70	20



AVELEY F.C. 1989/90

Celebrations galore as Aveley players celebrate their victory in the A.C. Delco Cup over St. Albans City at Dagenham last May with a champagne shower.

OUTSTANDING
PROSPECT.
QUICK OFF THE
MARK.
GOOD AT PASSING.
REASONABLE
TRANSFER FEE.



VAUXHALL

Once driven, forever smitten



VAUXHALL IS BACKED BY THE WORLDWIDE RESOURCES OF GENERAL MOTORS. CAR SHOWN ASTRA GTE.